



Conference & Events

ADELPHI HOTEL

ELITE VENUE SELECTION



Adelphi Hotel

LIVERPOOL

ELITE VENUE SELECTION



Welcome to Adelphi Hotel

Situated in the heart of Liverpool, the Adelphi Hotel is a historic Liverpool venue combining character with comfort.

Set on the iconic Ranelagh Place, this historic and grand venue combines convenience with character, placing guests moments from the city's key business districts, cultural attractions, and thriving waterfront.

Just a short walk from Liverpool Lime Street Station and within easy reach of major motorways, this hotel in Liverpool is the perfect choice for conferences, exhibitions, and corporate events of all sizes.

Our dedicated events team will support you each step of the way from initial planning right through to delivery.

Specialising in Events & Meetings

Choosing the right venue is key to a successful event, and at the Adelphi Hotel, we offer a flexible and welcoming setting for events across the North West.

The Adelphi Hotel offers a versatile selection of event rooms, ideal for meetings, banquets, and exhibitions. The Banqueting Hall accommodates up to 620 guests theatre-style or 500 for banquets, featuring a grand stage perfect for entertainment and presentations.

Additional rooms such as the Kensington, Pearce, and Sefton suites offer elegant spaces for mid-sized events, while smaller rooms like the Boardroom, Empire, and Crosby provide intimate settings for executive meetings and training sessions.

For more information, please call **0151 709 7200** option **2** or **3** or email sales700@theelitevenueselection.co.uk





Refreshment Breaks & Lunches

Our chefs have created a range of menus to keep your delegates refreshed and motivated throughout the day. From light working lunches to hot plates and cold selections, we offer flexible options to suit every event.

- Selection of freshly filled wraps and sandwiches
- An array of salad options with cold pastas and slaws
- Hot and cold finger buffets showcasing classic dishes, to our local favourite Scouse, alongside a variety of vegetarian options
- Delightful breaks with pastries, muffins, cookies and chef's tray bakes

Whether you prefer private dining, a relaxed networking event or informal buffet, our team will ensure every catering experience is enjoyable and seamless.

Be Inspired at the Adelphi Hotel

Adelphi Hotel provides a historic and charming setting for conferences, dinners, and private events. Our versatile event spaces include the Banqueting Hall for up to 620 guests, alongside a range of flexible meeting rooms ideal for smaller gatherings.

From large scale conferences to intimate meetings, we offer spaces suited to a wide range of occasions.



CAPACITIES & DIMENSIONS

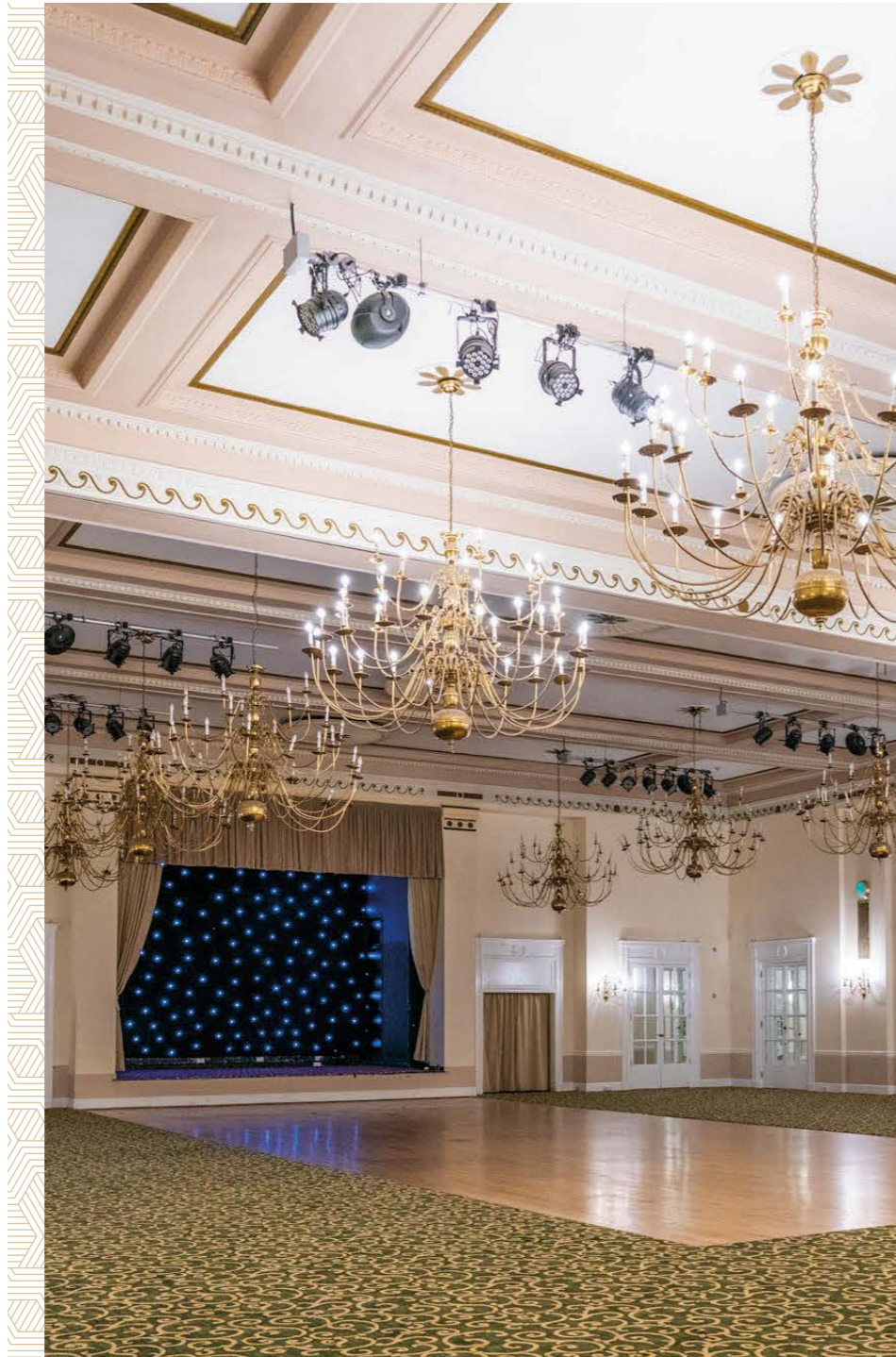
Room Name	Banquet (Rounds of 10)	Boardroom	Cabaret	Classroom	Theatre	U-Shape	Dinner Dance	Width (M)	Length (M)	Ceiling Height (M)	Natural Daylight	3 Phase Power	Blackout	Floor Level	Ventilation	Disabled Access
Banqueting Hall	500	-	400	430	620	-	450	19.8	24.3	6.4	N	Y	Y	G	COOLING	Y
Aintree	240	60	200	200	250	72	240	9.8	12.1	6.4	N	Y	N	G	WINDOWS	Y
Lancaster	240	60	200	200	250	72	240	9.8	12.1	6.4	N	Y	N	G	WINDOWS	Y
Lounge	240	-	-	-	350	-	-	12.1	23.7	5.4	Y	Y	N	G	WINDOWS	Y
Pearce	180	60	150	170	325	60	150	12.4	16.4	6.4	Y	Y	N	G	WINDOWS	Y
Derby	150	40	120	72	170	45	150	12.4	16.4	5.7	Y	N	N	G	WINDOWS	Y
Empire	60	35	56	50	100	30	50	7.6	11.5	5.4	Y	N	N	G	WINDOWS	N
Mersey	-	28	-	30	60	20	-	8.5	10	3.3	N	N	N	G	WINDOWS	Y
Crosby	72	35	64	60	90	35	60	11.5	11.5	6	Y	N	N	G	WINDOWS	N
Sefton	150	50	96	105	200	40	120	11.5	17	6.7	Y	Y	N	G	WINDOWS	Y
Boardroom	-	28	-	40	70	30	-	7.3	12.4	4.2	Y	N	N	MEZ	WINDOWS	Y
Kensington	350	60	264	400	550	-	300	12.3	38.1	5.5	N	Y	Y	-1	COOLING	Y
Formby	140	30	80	100	150	35	100	12.3	21	5.5	N	N	Y	-1	COOLING	Y
Woolton	-	15	-	20	30	-	-	9.1	11.6	5.5	N	N	Y	-1	COOLING	Y
Gateacre	-	15	-	20	30	-	-	9.1	6.5	5.5	N	N	Y	-1	COOLING	Y
Thornton	-	15	-	20	30	-	-	9.1	7.7	5.5	N	N	Y	-1	COOLING	Y
Executive	-	16	-	16	24	16	-	2.7	3.9	-	Y	N	-	MEZ	WINDOWS	N

Banqueting Hall

The Banqueting Hall is our largest and most established event space, combining Edwardian grandeur with flexible modern functionality. Featuring high ceilings, ornate chandeliers and classic architectural detailing, the space offers an impressive backdrop for large-scale events.

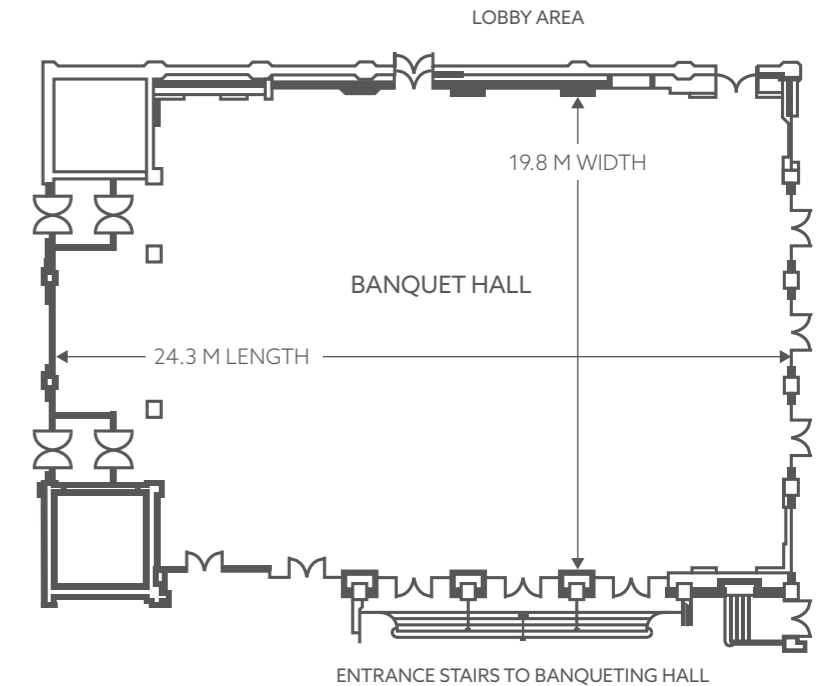
With its private entrance and dedicated bar area, the Banqueting Hall operates as a self-contained event space, enhancing guest flow and exclusivity. Its size, versatility and character make it one of Liverpool's most established large-capacity venues.

With a built in Proscenium Arch Stage, it is perfect for live entertainment.



Room Information & Floor Plan

- Up to 620 delegates
- Located on the ground floor
- Historic ballroom with arched ceilings and art deco design. Ideal for large conferences, dinners, and product launches
- Large Dance floor
- Room dimensions x 19.8 m (w) x 24.3 m (l) x 6.4 m (h)
- Exclusive bar and reception area
- Floor Area - 481.14 m²
- Free Wi-Fi included



Banquet



Up to 500

Cabaret



Up to 400

Classroom



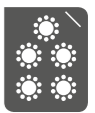
Up to 430

Theatre



Up to 620

Dinner



Up to 450

Sefton Suite

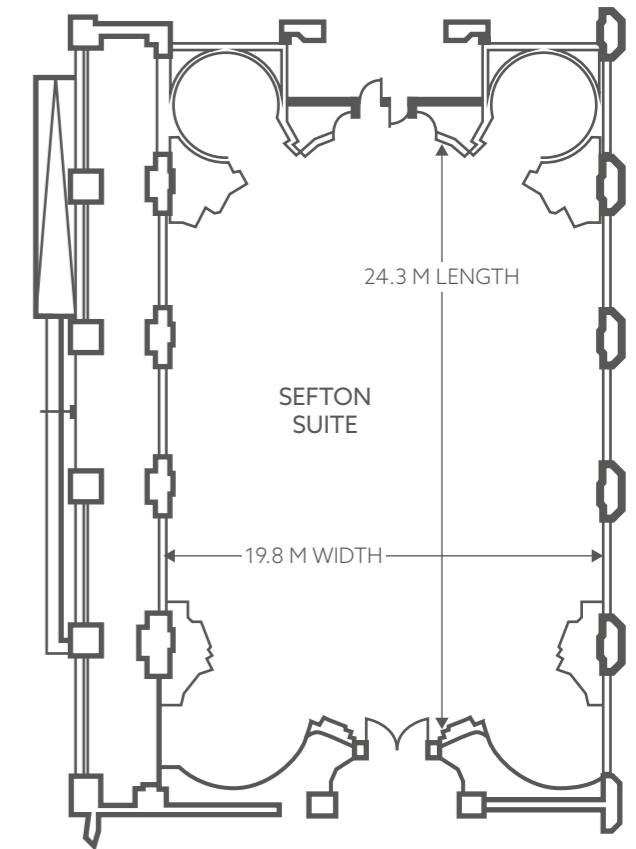
The Sefton Suite is one of the most distinctive event spaces within the Adelphi Hotel, renowned for its historic character and elegant design. The room was rumoured to have been replicated in the infamous RMS Titanic's first class smoking lounge, featuring rich wooden panelling, a large central chandelier, and intimate alcoves that create a classic, atmospheric setting.

Accommodating up to 200 guests in various layouts, the suite is ideal for conferences, training sessions, private dinners, and receptions. Its flexible design ensures it can be adapted to suit both business and social occasions.



Room Information & Floor Plan

- Up to 200 delegates
- Located on the Ground floor
- Dance floor can be added
- Adjoined to the Crosby Suite, providing a seamless flow between the spaces
- Perfect for conferences, meetings, and private dining
- Room dimensions
11.5 m (w) x 17 m (l) x 6.7 m (h)
Floor Area - 195.5 m²
- Free Wi-Fi included



Banquet



Up to
150

Boardroom



Up to
50

Cabaret



Up to
96

Classroom



Up to
105

Theatre



Up to
200

U-Shape



Up to
40

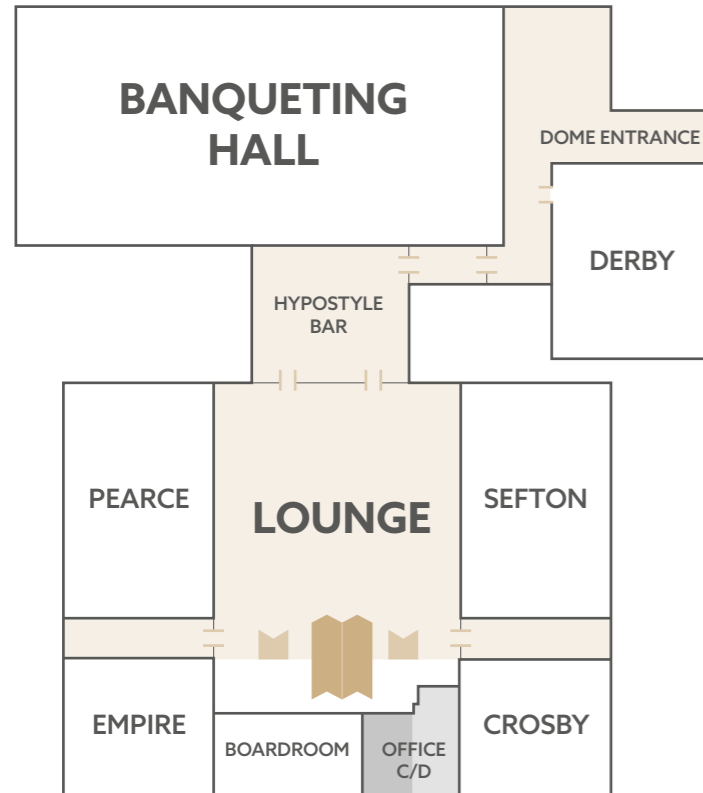
Dinner



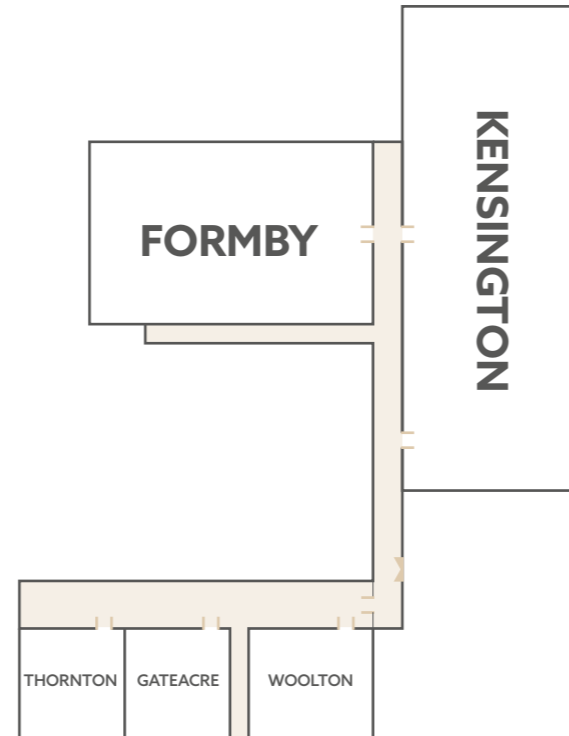
Up to
120

Remaining Room Layouts

Ground Floor



Lower Ground (LG)

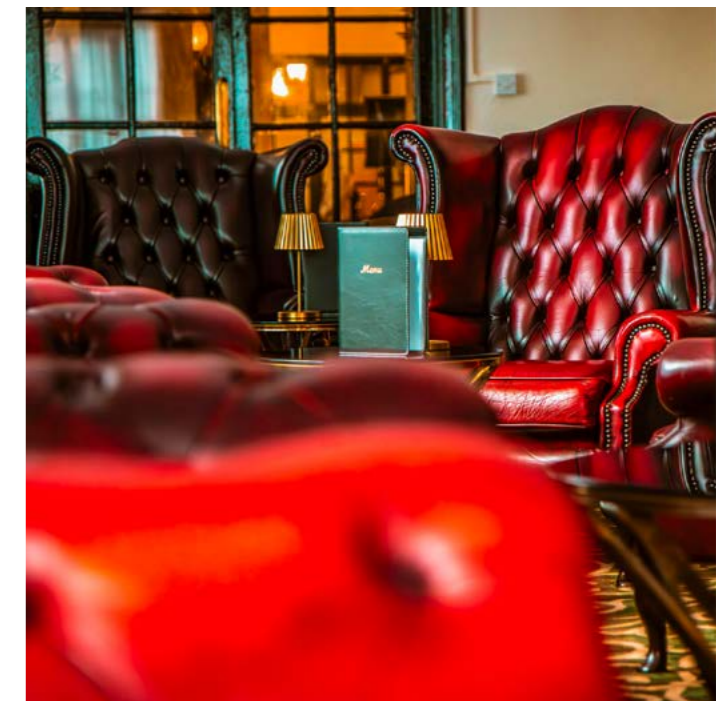
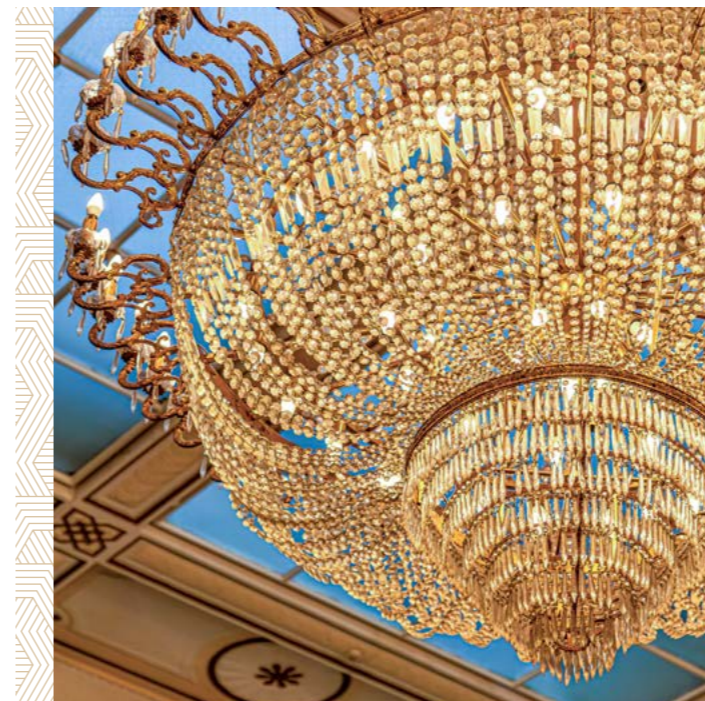
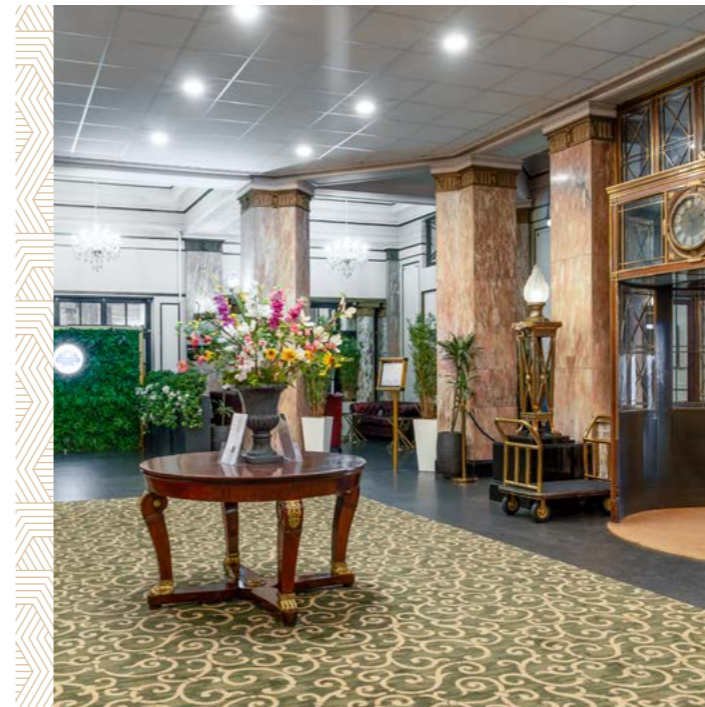


What facilities are available in the event spaces?

Event spaces include stages, dance floors, removable walls, private bars, power supply, and free Wi-Fi.

What types of events can be hosted?

We can host a wide range of events: conferences, banquets, exhibitions, gala dinners, workshops, corporate meetings and more.

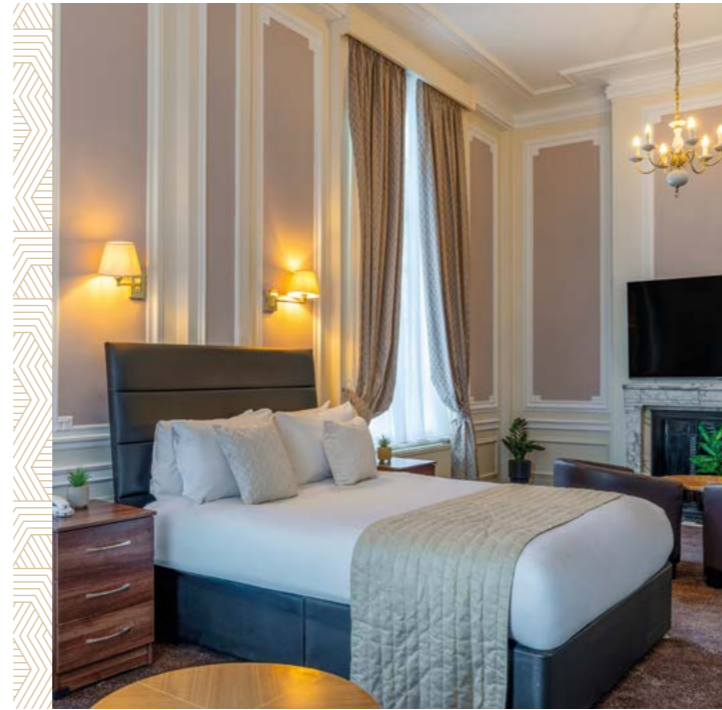


Extend Your Stay

The Adelphi Hotel combines Victorian charm with a classic city setting. Whether you are looking to relax or enjoy the vibrant town centre, we provide the perfect base for turning your event into a memorable Liverpool experience.

Hotel Facilities

- 402 bedrooms
- 18 function rooms accommodating up to 620 delegates
- Audio-visual equipment and technical support available
- Jenny's Restaurant
- The Grand Lounge
- American Bar
- Wave Bar
- Free Wi-Fi
- Car parking available (charges apply)





What to Do Next

If you're considering the Adelphi Hotel for your event, you can check availability and book with us directly.

Our dedicated events team will be able to answer any questions you have about your forthcoming event.

Contact Information

Hotel: 0151 709 7200

Sales: 0151 702 7801

Email: sales700@theelitevenueselection.co.uk

Adelphi Hotel
Ranelagh Place
Liverpool
L3 5UL



Scan the QR code on your smartphone or tablet camera to visit our social media.



Adelphi Hotel, Ranelagh Place, Liverpool, L3 5UL.

Tel: 0151 709 7200 **Sales:** 0151 702 7801

Email: sales700@theelitevenueselection.co.uk